

Meter Mounting Equipment

Commercial Meter Pedestals

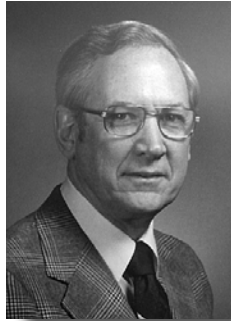


MILBANK®





Charles A. Milbank
1879-1966



Bill Martin
1916-1998



Robert F. Waldrop
1922-2002



Robert F. Waldrop, II
Chairman



Katrina Waldrop Henke
Vice Chairman

Milbank–Quality Metering Products for 80 Years

Milbank Manufacturing Company was established in 1927 by Charles A. Milbank. Originally, the company manufactured high voltage switches; however, by 1941 Milbank devoted itself primarily to the manufacture of sheet metal enclosures and related equipment for the electrical generation and distribution industry. Today we are an industry leader in the manufacture of electrical meter sockets. Through a national network of manufacturer's representatives we provide wholesale electrical distributors with quality electrical products for the utility, contractor, industrial and OEM markets.

As the meter standards have changed, Milbank has been successful in adapting its product line to these changes. Our full scale engineering department designs products to meet customer specifications and satisfy all utility requirements. Milbank's employee base of over 1,000 workers, along with our five manufacturing facilities com-

prising almost 550,000 square feet give us the flexibility to schedule, produce, and ship orders quickly. Currently, Milbank manufactures over 10,000 different catalog items, and this list continues to grow. Our unique product offering includes: Residential & Commercial Meter Sockets; Residential & Commercial Meter Pedestals; RV/MH Power Outlets, Service Pedestals, and Transformers; Commercial & Industrial Electrical Enclosures; Circuit Breakers; Disconnects & Safety Switches; Safety Sockets; Utility & Residential Secondary Pedestals; Hubs, and related accessories. If you don't find a unit in this catalog to service your needs, send us your specifications and we will be happy to work with you.

Our success has come from a loyal customer base that can rely on us to build quality products at a fair price in a timely manner. Our willingness and ability to design and produce new products to meet our customer demands is

an important factor to remain competitive in today's electrical market.

Milbank has been serving the electric utility & wholesale distribution industries for 80 years with innovative, quality engineered products. So remember us for all of your meter mounting and related requirements, and we will be happy to serve you as we have in the past—with dependable service and quality products!

We take great pride in being one of the few family-owned businesses left in our industry. We are a third generation run business and truly believe that...

**FAMILY MAKES A
DIFFERENCE!**



COMMERCIAL METER PEDESTALS OVERVIEW	4
APPLICATIONS & ACCESSORIES	5
CATALOG NUMBER LOGIC	6
ML SERIES – MAIN LOAD CENTER	7
SL SERIES – SWITCHED LOAD CENTER	8
400 AMP SERIES	9
IR SERIES – IRRIGATION CONTROL	10
BBS/UPS SERIES	11
POWER TRANSFER SERIES – METERED & UNMETERED	12
GENERAL SPECIFICATIONS	13
COMMERCIAL METER PEDESTAL DRAWINGS – 16” METERED & UNMETERED	14
COMMERCIAL METER PEDESTAL DRAWINGS – 24” METERED & UNMETERED	15
COMMERCIAL METER PEDESTAL DRAWINGS – 32” METERED	16
COMMERCIAL METER PEDESTAL DRAWINGS – METERED	17
ADDITIONAL MILBANK PRODUCTS	18
COMMERCIAL PEDESTAL WORKSHEET	19

Commercial Pedestals

• *Attractive* • *Easy to install* • *Secure* • *Cost effective*

**Un-Strut
Your
Stuff...**



Commercial Pedestals are an attractive, secure, easy to install and cost-effective solution when underground remote site power distribution and control equipment is required, replacing unsightly and inefficient strut and backboard structures.

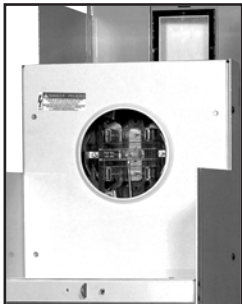


Strut and backboard design



Commercial Pedestal

UL Listed as Industrial Control Equipment (File E113855).



Ringless Socket



Ring-type Socket



Utility Lug Landing



Customer Interior

STANDARD FEATURES –COMMERCIAL PEDESTALS

- Type 3R rainproof, vandal-resistant cabinet of polyurethane powder-coated steel (aluminum or stainless steel also available)
- UL listed as enclosed industrial control equipment (UL508)
- Isolated, lockable & sealable utility metering & lug landing sections
- Lockable customer section for distribution & control equipment with internal deadfront
- Print pocket inside customer section door contains wiring schematics and installation instructions
- Most load centers are UL listed for use with various manufacturers' circuit breakers
- All stainless steel external hardware (screws, bolts, hinges, handles, hasps and sealing screws)
- Meets EUSERC 308 and other utility standards.

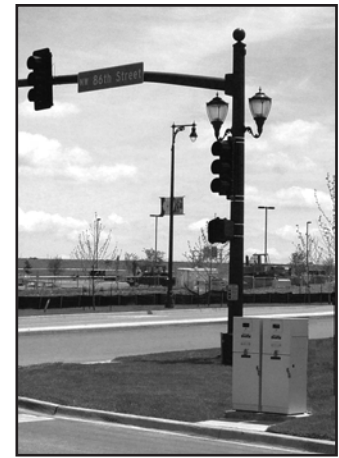


Utility requirements for this equipment may vary. Always consult the serving utility before ordering or installing equipment in this catalog.

APPLICATIONS

These units are ideal for controlling and metering:

- Traffic signals
- Street lighting
- Irrigation / sprinkler systems
- Cell towers / telephone vaults
- Pump stations
- Temporary power for fairgrounds, swap meets, outdoor markets, portable offices, holiday lights, etc.
- Outdoor lighting for athletic fields, tennis and basketball courts, parking lots, landscaping and subdivision entrances, etc.



AVAILABLE FACTORY-INSTALLED OPTIONS

- Meter sockets – ring type or **ringless**, to 400 amp (unmetered and dual-metered pedestals also available)
- Main and branch breakers or T fuses
- Distribution – copper load centers & panel boards
- Clocks / timers / relays
- Photoelectric cells and controls
- Power receptacles – pin & sleeve, twist lock or straight blade
- Contactors – definite purpose, electrical or mechanically held, IEC and mercury types
- Surge protection & lightning arrestors
- Reserve inlet generator receptacle with interlocked circuit breakers
- Motor starters, relays
- Push button controls
- Thermostat controls, fans and heating strips
- Power blocks and terminal blocks
- Steel, aluminum and plywood back boards
- Transformers
- Interlock devices for circuit breakers
- Available in steel, aluminum (raw painted or anodized) or stainless steel construction with powder-coated finish available in 8 standard colors or special ordered RAL colors.
- Available for applications up to 400 amp, 120V, 208V, 240V, 277V, 480V – 1Ø or 3Ø.

ACCESSORIES



K3865

Fifth terminal kit for use with ringless meter sockets

105J

Fifth terminal kit for use with ring-type meter sockets



CP-TC7D

7-day time clock kit

CP-TC24H

24-hour time clock kit

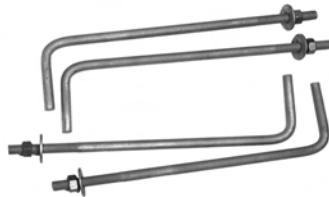
CP-TCWIRE

Male four-pin connector and wiring harness for use with time clocks other than shown



CP-16FPAD

Fiberglass pedestal mounting base for 16" pedestal (direct buried)



CP-ABK5/8

Anchor bolt kit (includes four 5/8 - 13 x 18" anchor bolts)

CP-16PDMNT-CALT

Pedestal mounting base for 16" pedestal

CP-24PDMNT-CALT

Pedestal mounting base for 24" pedestal (includes mounting hardware)

CP-32PDMNT

Pedestal mounting base for 32" pedestal (includes mounting hardware)

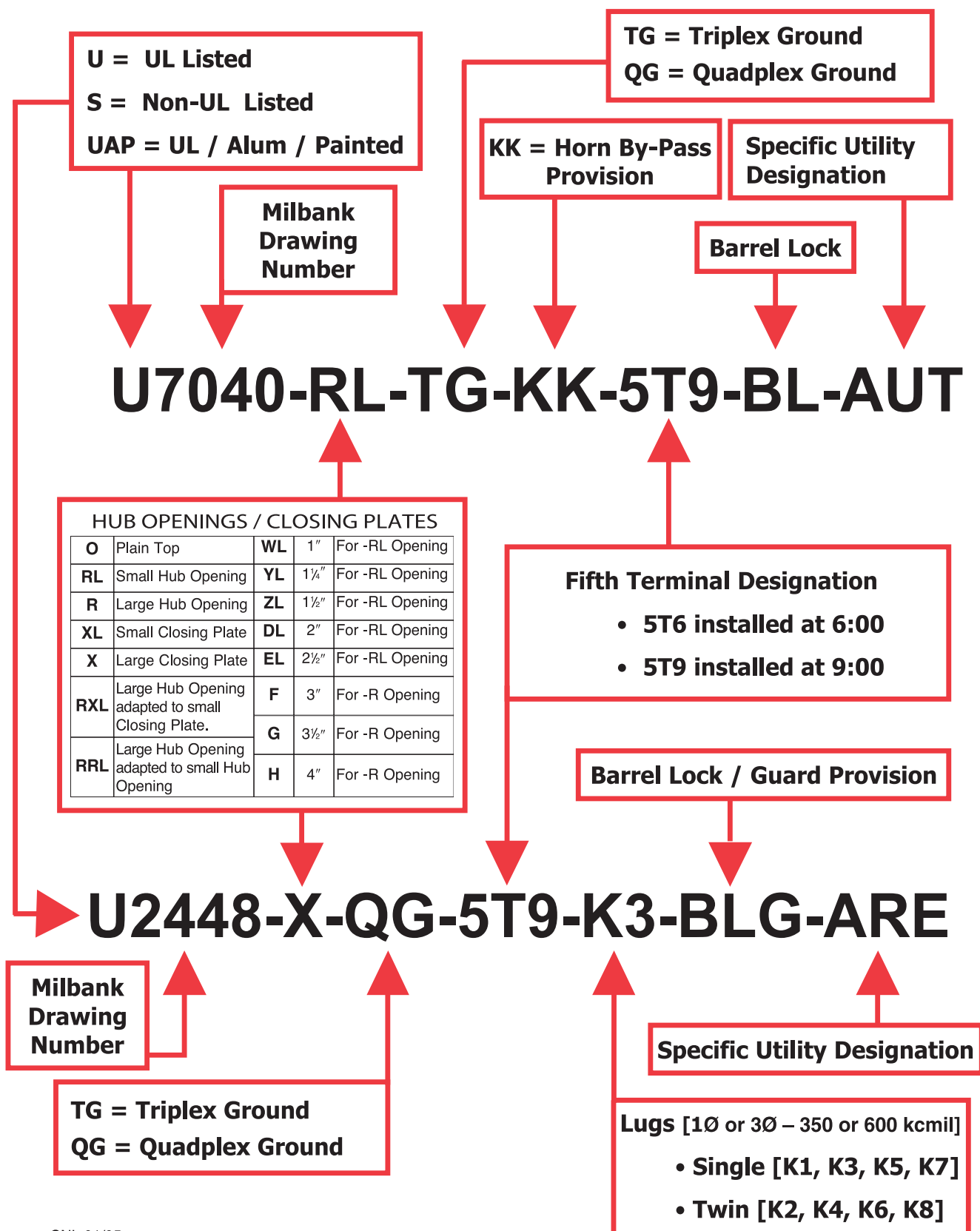


CP-PE-HOA-3POS

HOA switch – for field installation

Utility requirements for this equipment may vary. Always consult the serving utility before ordering or installing equipment in this catalog.

Catalog Number Logic



CNL 01/05

Logic description subject to change and factory interpretation.

CP3B “ML” Series

Main Load Center Series

1Ø3 wire 120/240 or 208Y/120 volt

Typical applications: Remote site service for multiple loads

The **Milbank Main Load Center Commercial Pedestals** are designed to handle the vast majority of all requirements in a standard, stocked configuration.

- No waiting or extra charge
- Units all feature a load center with a plug-on, back-fed main breaker.
- Load center has 16 positions for the 100 amp pedestals and 24 circuits for the 200 amp pedestals.
- Both sizes include sub-feed lugs to allow feeding an external panel

If your application requires turning loads on based on “dusk-to-dawn” requirements, be sure to see the **Milbank Switched Load Center Commercial Pedestal** products on the following page.



Features:

These units include everything required for remote site service:

- ➔ NEMA 3R construction
- ➔ Expandable – Load centers allow for future expansion without costly modifications
- ➔ All units feature 200 amp meter socket with optional field-installable fifth terminal kit available
- ➔ 22K ampere interrupting capacity (AIC) standard
- ➔ Optional mounting base can be embedded in concrete for fast, easy installation
- ➔ Separate sealable and lockable utility termination section
- ➔ Separate sealable and lockable metering section with the option of:

EITHER

- Milbank ring-type socket with test / bypass blocks (conforms to EUSERC 308)

OR

- Milbank heavy duty ringless socket with lever bypass
- ➔ A separate sealable and lockable customer section with a load center for “always on” loads that includes:
 - Main circuit breaker
 - Twenty (200 or 125 amp model) or fourteen (100 amp model) blank breaker spaces
 - A circuit directory to document configuration

STOCKED PEDESTALS*	OPTIONAL FIFTH TERMINAL KIT	MAIN CB AMPS	LOAD CENTER SPACES	CIRCUITS	AIC	METER SOCKET TYPE
CP3B11115A22	105J	100	1,2	16	22K	Ring-type with test / bypass blocks
CP3B11115A42	105J	100	1,2	16	42K	Ring-type with test / bypass blocks
CP3B12119A22	105J	200	1,2,3,4	24	22K	Ring-type with test / bypass blocks
CP3B51115A22	K3865	100	1,2	16	22K	Ringless socket with lever bypass
CP3B52119A22	K3865	200	1,2,3,4	24	22K	Ringless socket with lever bypass

***NOTE:** Chart shows standard, stocked items. Other options and features are available. Contact factory for options details and availability.

Utility requirements for this equipment may vary. Always consult the serving utility before ordering or installing equipment in this catalog.

CP3B “SL” Series

Switched Load Center Series

1Ø 3 wire 120/240 or 208Y/120 volt

Typical applications: Traffic signal, parking lot, highway, & athletic field lighting

The **Milbank Switched Load Center Commercial Pedestals** are designed to not only provide power for various loads, but also to switch specific loads on and off under certain conditions. A photoelectric cell is used for these controlled loads, and an optional time clock is also available.



Features:

These units include everything required for remote service:

- NEMA 3R construction
- Expandable – Load centers allow for future expansion without costly modifications
- All units feature 200 amp meter socket with optional field-installable fifth terminal kit available
- 22K ampere interrupting capacity (AIC) standard
- Optional mounting base can be embedded in concrete for fast, easy installation
- Separate sealable and lockable utility termination section
- Separate sealable and lockable metering section with the option of:

EITHER

- Milbank ring-type socket with test / bypass blocks (conforms to EUSERC 308)

OR

- Milbank heavy duty ringless socket with lever bypass
- A separate sealable and lockable customer section with:
 - Control circuit including:
 - PE receptacle, Lexan® window and glare shield
 - Hand-Off-Auto (HOA) switch
 - Contactor controlling a 16-circuit load center for controlled loads
 - Pre-mounted DIN rail and pre-wired connector to add an optional “plug and play” time clock kit for PE on and TC off operation
 - A circuit directory to document configuration
 - A load center for “always on” loads that includes:
 - Main circuit breaker
 - Control power circuit breaker
 - Switched load center main breaker
 - Nine (200 amp model) or eleven (100 amp model) blank breaker spaces
 - A circuit directory to document configuration

STOCKED PEDESTALS*	OPTIONAL FIFTH TERMINAL KIT	MAIN CB AMPS	CB SPACES	CONTACTOR AMPERAGE	METER SOCKET TYPE
CP3B11110A22SL1	105J	100	(1,3)	60	Ring-type with test / bypass blocks
CP3B12110A22SL1	105J	200	(1,2,3,4)	100	Ring-type with test / bypass blocks
CP3B51110A22SL1	K3865	100	(1,3)	60	Ringless socket with lever bypass
CP3B52110A22SL1	K3865	200	(1,2,3,4)	100	Ringless socket with lever bypass

*NOTE: Chart shows standard, stocked items. Other options and features are available. Contact factory for options details and availability.

Utility requirements for this equipment may vary. Always consult the serving utility before ordering or installing equipment in this catalog.

CP3B “400” Series

400 amp Series

1Ø 3 wire 120/240 or 208Y/120 volt

Typical applications: Remote site service for residential and commercial jobsites

The **Milbank 400 amp Commercial Pedestal** is designed to provide a weather and vandal resistant metered enclosure for various loads and distribution. Each pedestal has been designed to handle a wide range of applications using standard, stocked configurations.

- Choice of a single main breaker or twin service disconnect breakers gives flexibility to the pedestal design.
- Optional distribution with feed-thru lugs below the service disconnect breakers allows the pedestal to handle numerous applications.
- Typical applications include remote homes where the metering is best located at the curb side or other remote area. The pedestal can also provide power to secondary residence, on-site business, workshop, irrigation, lighting, security or other secondary load.
- Available in custom colors to match home or landscaping.



Features:

These units include everything required for remote site service:

- ➔ NEMA 3R construction
- ➔ Main circuit breaker or dual service disconnects
- ➔ Expandable – Load center units allow for future expansion without costly modifications
- ➔ 22K ampere interrupting capacity (AIC) standard
- ➔ Optional mounting base can be embedded in concrete for fast, easy installation
- ➔ Separate sealable and lockable utility termination section with lug termination
- ➔ Separate sealable and lockable metering section
- ➔ A separate sealable and lockable customer section with a circuit directory and a print pocket to hold all documentation

Meter Socket Options:

- Ring type with bypass studs
- Ringless with heavy duty lever bypass
- K type bolt-on

STANDARD PEDESTALS*	OPTIONAL FIFTH TERMINAL KIT	MAIN CB	LOAD CENTER CIRCUITS	AIC	METER SOCKET TYPE
CP3B1411JB22	N/A	320 amp (400 max)	0	22K	Ring type with test / bypass studs
CP3B14120B22	N/A	2-200 amp	(2) 12 ckt ①	22K	Ring type with test / bypass studs
CP3B5411JB22	K3865	320 amp (400 max)	0	22K	Ringless with lever bypass
CP3B54120B22	K3865	2-200 amp	(2) 12 ckt ①	22K	Ringless with lever bypass
CP3B8411JB22	②	400 amp	0	22K	K4 Bolt-on
CP3B84120B22	②	2-200 amp	(2) 12 ckt ①	22K	K4 Bolt-on

***NOTE:** Chart shows standard items. Other options and features are available. Contact factory for options details and availability.

Stud utility landing is standard. Lug kits are available from factory.

① Units with load centers have (2) #6-250 sub-feed lugs on each load center. (Each load center is 200 amp rated and UL Listed with: Siemens, General Electric and Cutler-Hammer plug-in style circuit breakers.)

② When ordering, specify lugs or studs for utility landings.

Three phase units available — contact factory.

Utility requirements for this equipment may vary. Always consult the serving utility before ordering or installing equipment in this catalog.

CP3B “IR” Series

Irrigation Control Pedestals

1Ø 3 wire 120/240 or 208Y/120 volt

Typical application: Metered Power Pedestal for Irrigation Systems

The Milbank “IR” series Commercial Pedestals are designed to provide a weather and vandal resistant metered enclosure for irrigation controllers. Breakers and a GFI duplex receptacle are provided to power the irrigation controllers supplied by others. A plywood backboard is mounted behind the deadfront door for mounting the irrigation controller. A large plan pocket is mounted inside the customer section door to hold plans and specifications. Light green powder coated steel or stainless steel pedestals are normally in stock.



Features:

These units include everything required for remote site service:

- NEMA 3R construction
- 2 each 20 amp single pole circuit breakers: one breaker for standard 20 amp GFCI receptacle and one breaker for irrigation control circuit
- Large plywood back panel for mounting irrigation controller
- All units feature 200 amp meter socket with optional field-installable fifth terminal kit available
- 10K ampere interrupting capacity (AIC) standard
- Optional mounting base can be embedded in concrete for fast, easy installation
- Separate sealable and lockable utility termination section
- Separate sealable and lockable metering section with the option of

EITHER:

- Milbank ring-type socket with test / bypass blocks (conforms to EUSERC 308)

OR

- Milbank heavy duty ringless socket with lever bypass

STOCKED PEDESTALS*	OPTIONAL FIFTH** TERMINAL KIT	EXTERIOR CABINET	METER SOCKET TYPE
CP3B111IRASP	105J	Steel, Light Green	Ring type meter socket with test / bypass blocks
CP3B111IRASS	105J	Stainless Steel	Ring type meter socket with test / bypass blocks
CP3B511IRASP	K3865	Steel, Light Green	Ringless heavy duty meter socket with lever bypass

*NOTE: Chart shows standard, stocked items. Other options and features are available. Contact factory for options details and availability.

*See page E2 for options (accessories) details.

Utility requirements for this equipment may vary. Always consult the serving utility before ordering or installing equipment in this catalog.



CP3B BBS Series

1Ø 3 wire 120/240 or 120/208 volt

Typical applications: Metered emergency uninterrupted power for traffic intersections, wireless, phone and communication equipment, parking lots, camera and security locations.

The **Milbank BBS Series Commercial Pedestals** are designed to provide battery backup power for various loads, and to switch specific loads on and off under certain conditions; a photoelectric cell or time clock to control lighting circuits, as an example. Metered and non-metered power distribution options are available. The back-up power pedestal is designed to handle the vast majority of today's back-up power requirements. By using 19" rack design, shelves can be adjusted to accommodate the required batteries and manufactures DC to AC inverters, transfer switches and other related equipment. This design gives the user a wide range of design and configuration options. Complete turnkey, ready to power-up pedestals are offered along with basic units ready to accept batteries and inverters supplied by others.



Features:

- NEMA 3R construction, UL listed as "Enclosed Industrial Control Equipment"
- 100 through 320 amp meter socket with the option of either:
 - Milbank ring type socket (conforms to EUSERC 309) with or without test / bypass blocks
 - Milbank heavy duty ringless socket with lever bypass
- Separate sealable utility termination compartment
- An isolated separate customer section with:
 - Service disconnects
 - Power distribution options
 - Power control
- 19" wide rack in customer compartment for easy layout of equipment
- Battery trays
- Thermostat with cooling fan
- Filtered louvers for heat rise flow through ventilation (UL Listed 508A)
- Three point door latch (key or pad lockable)

Options:

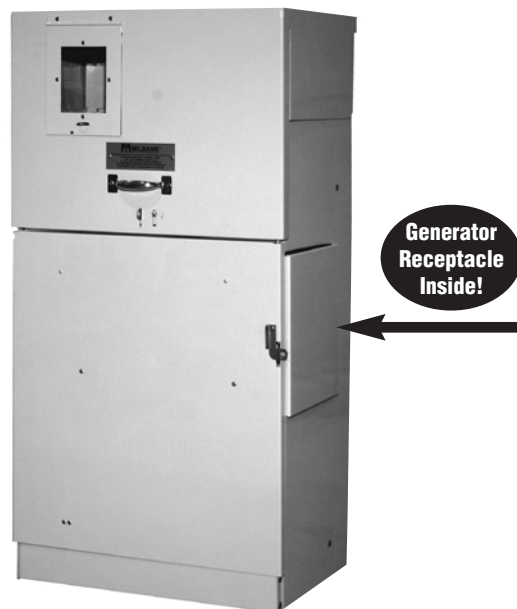
- Manual Bypass switch (used for maintenance of BBS/UPS)
- Transfer switch for generator power back-up
- Generator inlet receptacles 30 amps through 200 amps
- Pad lockable provision for receptacles
- Police access door
- Metered load center distribution
- Non metered load center distribution
- Photo electric controls (for street lighting)
- Time clocks
- HOA switches
- Contactors
- GFI duplex receptacles
- Thermostat for heating control
- Heating pads or elements
- Roll out shelves for batteries
- Surge arrestors and lighting arrestors

Utility requirements for this equipment may vary. Always consult the serving utility before ordering or installing equipment in this catalog.

CP3B “Power Transfer” Series

1Ø3W 120/240 volt thru 3Ø4W 277/480 volt

Typical applications: Traffic intersections, Cell sites, Phone company broadband service, Cable TV, Pump and Lift stations requiring utility power with back up generator power



CP3B “Power Transfer” Series – Metered

The Milbank Commercial Pedestal “Power Transfer Series” provides metered AC power, distribution, surge suppression, mechanical interlock and stand by generator receptacle. All electrical equipment including the generator receptacle is built inside the pedestal, giving it a clean appearance and making it extremely vandal resistant. ▲

Features & Options:

- 120/240v 1Ø3W thru 277/480v 3Ø4W ratings
- Choice of EUSERC ring type or **ringless** meter sockets
- 60 amps thru 400 amp ratings
- 10K AIC up to 50K AIC ratings
- UL Listed 508A, NEMA 3R rated
- Pad lockable, isolated utility compartments
- 20 amp GFI convenience receptacle
- Lockable recessed generator receptacle door
- Utility and generator indicator light options
- All stainless steel hardware
- Galvanized steel, aluminum or stainless steel cabinet options
- Custom designs available

CP3B “Power Transfer” Series – Unmetered

The Milbank Commercial Pedestal “Power Transfer Series” provides non metered AC power, distribution, surge suppression, mechanical interlock and stand-by generator receptacle – all in a neat, compact pedestal. ▲

Features & Options:

- 120/240v 1Ø3W thru 277/480v 3Ø4W ratings
- 60 amps thru 400 amp ratings
- 10K AIC up to 50K AIC ratings
- UL listed 508A, NEMA 3R rated
- Pad lockable, isolated utility compartments
- 20 amp GFI convenience receptacle
- Utility and generator indicator light options
- All stainless steel hardware
- Galvanized steel, aluminum or stainless steel cabinet options
- Custom designs available



Utility requirements for this equipment may vary. Always consult the serving utility before ordering or installing equipment in this catalog.

Example of specifications for a Metered Commercial Pedestal

Commercial pedestal shall be type _____.
Catalog # _____

Voltage rating : ____ (120/240v 1P 3W)____
AIC rating: ____10____
Amperage rating : ____ (100 amps)____

The pedestal shall be of NEMA Type 3R rainproof construction and shall be UL Listed as “Enclosed Industrial Control Equipment” (UL 508A). External construction shall comply with UL50 requirements and shall be of G90 galvanized steel with light green #14672 Federal Specification 595 polyurethane industrial grade powder paint of 1.7 mil minimum thickness (unless otherwise specified). Aluminum and stainless steel are other factory options available. Internal construction shall be G90 galvanized steel and 1.7 mil minimum thickness polyurethane industrial grade powder coat painted or bare aluminum. No fasteners except sealing screws shall be removable by external access. Hinges shall be stainless steel and of the continuous piano hinge type.

The pedestal mounting bolts shall not be externally accessible. The pedestal shall be offered with an optional base designed to be embedded in concrete in place of anchor bolts. Either pedestal mounting base or anchor bolt kit is required for installation.

The service pedestal must have three separate isolated sections for metering equipment, utility termination and customer equipment.

The metering section must be pad-lockable and sealable and have a hinged swing back hood with an integral hinged polycarbonate sealable window for access to demand meters. An external nameplate shall be permanently attached to the hood. A stainless steel handle shall be provided on the front exterior of the hood. Meter socket type shall meet the requirements of the serving utility.

The utility termination section must be pad-lockable and sealable and shall have a stainless steel handle provided on a lift-off cover. Sufficient clearance shall be provided for a 4-inch diameter conduit for utility cables entrance. Utility landing lugs shall be UL listed and shall accommodate #6 – 350 kcmil conductors.

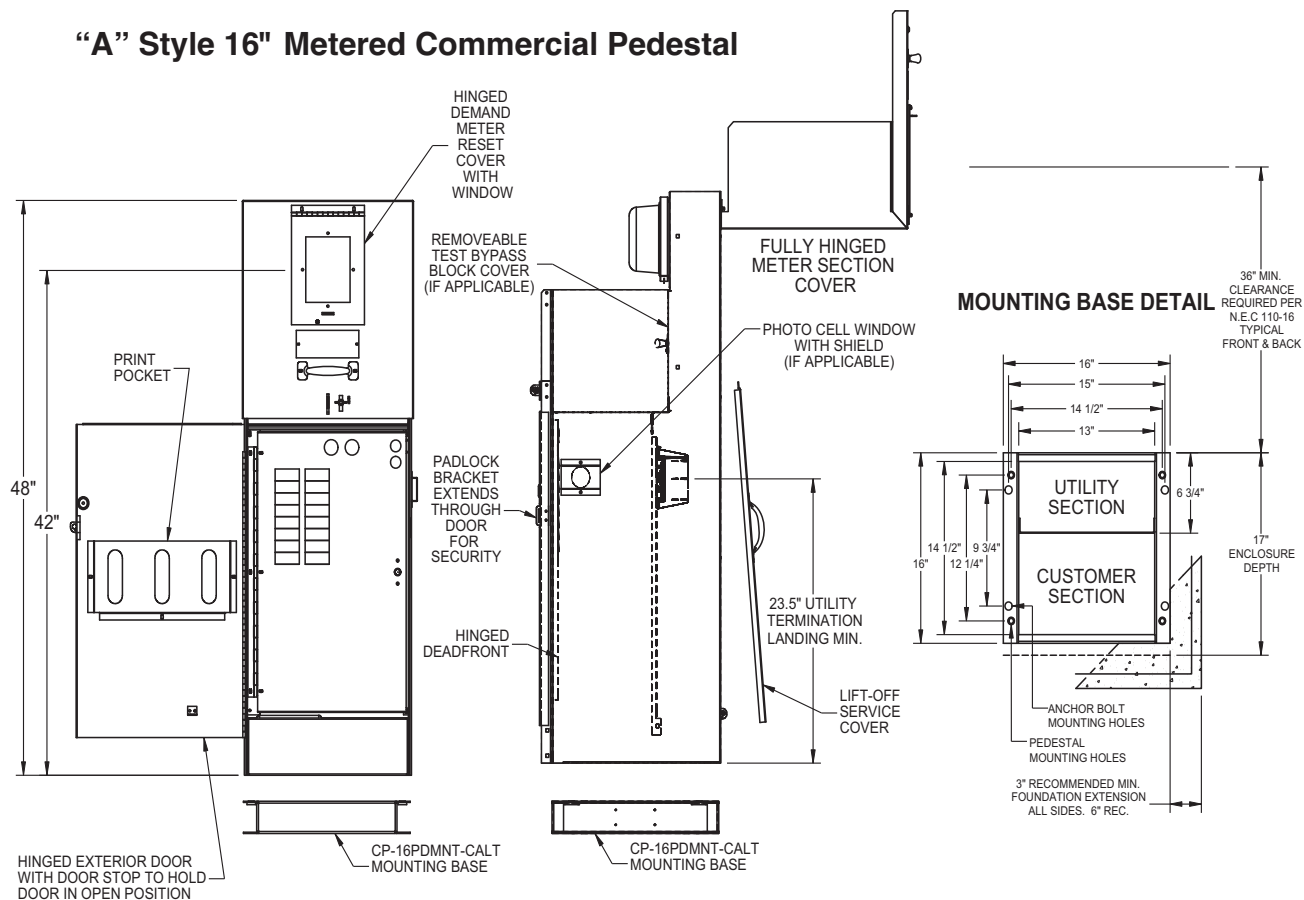
The customer compartment door to be hinged on the left hand side. A stainless pad-lockable hasp provided to secure customer compartment. A door keeper provided to keep the door in an open position. A print pocket on the inside of the door shall hold all wiring schematics, circuit directories and instructions in a clear, weatherproof sleeve. Required UL labeling shall be located on the inside of the customer door. Distribution and control equipment shall be behind an internal dead-front door with a quarter-turn securing latch and be hinged to open more than 90 degrees. The dead-front door shall be hinged on the same side as the customer section door. All distribution and control equipment shall be factory wired using 600 volt wire sized to NEC and UL requirements.

The service pedestal shall be rated for operation at 10K minimum (AIC) amps interrupting capacity. The provided documentation shall list circuit breaker combinations and those to be used for de-rated operation for series ratings. Circuit breakers shall be permanently labeled with engraved name plates.

Utility requirements for this equipment vary. Always consult the serving utility for their requirements before ordering or installing this equipment.

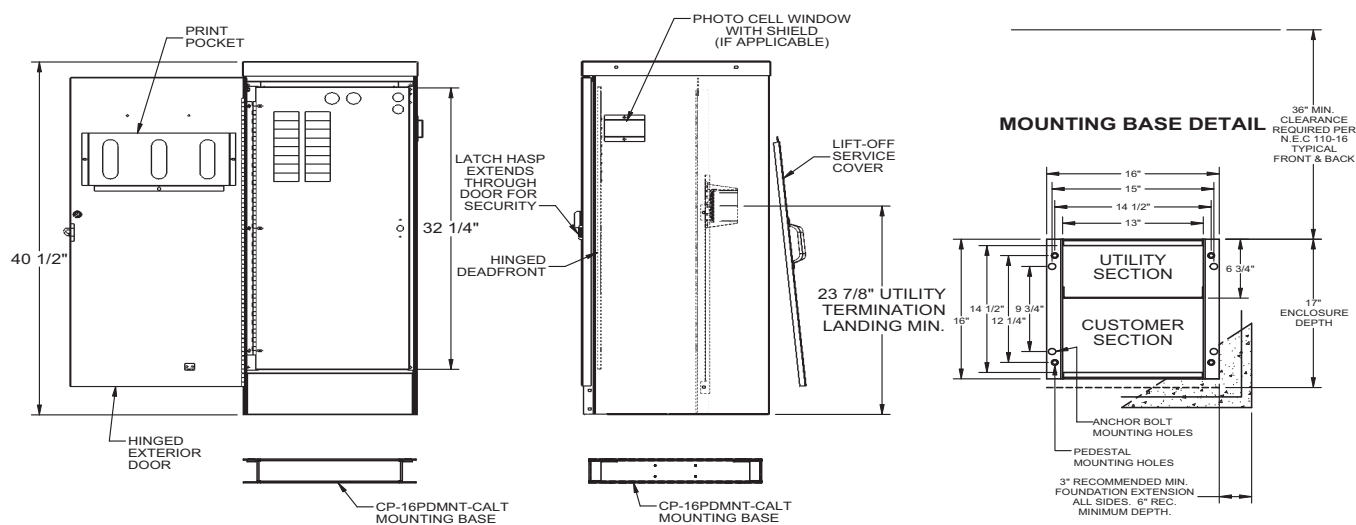
Utility requirements for this equipment may vary. Always consult the serving utility before ordering or installing equipment in this catalog.

“A” Style 16" Metered Commercial Pedestal



Pad Mount Base or (4) 5/8-11 X 18" Anchor Bolts Recommended

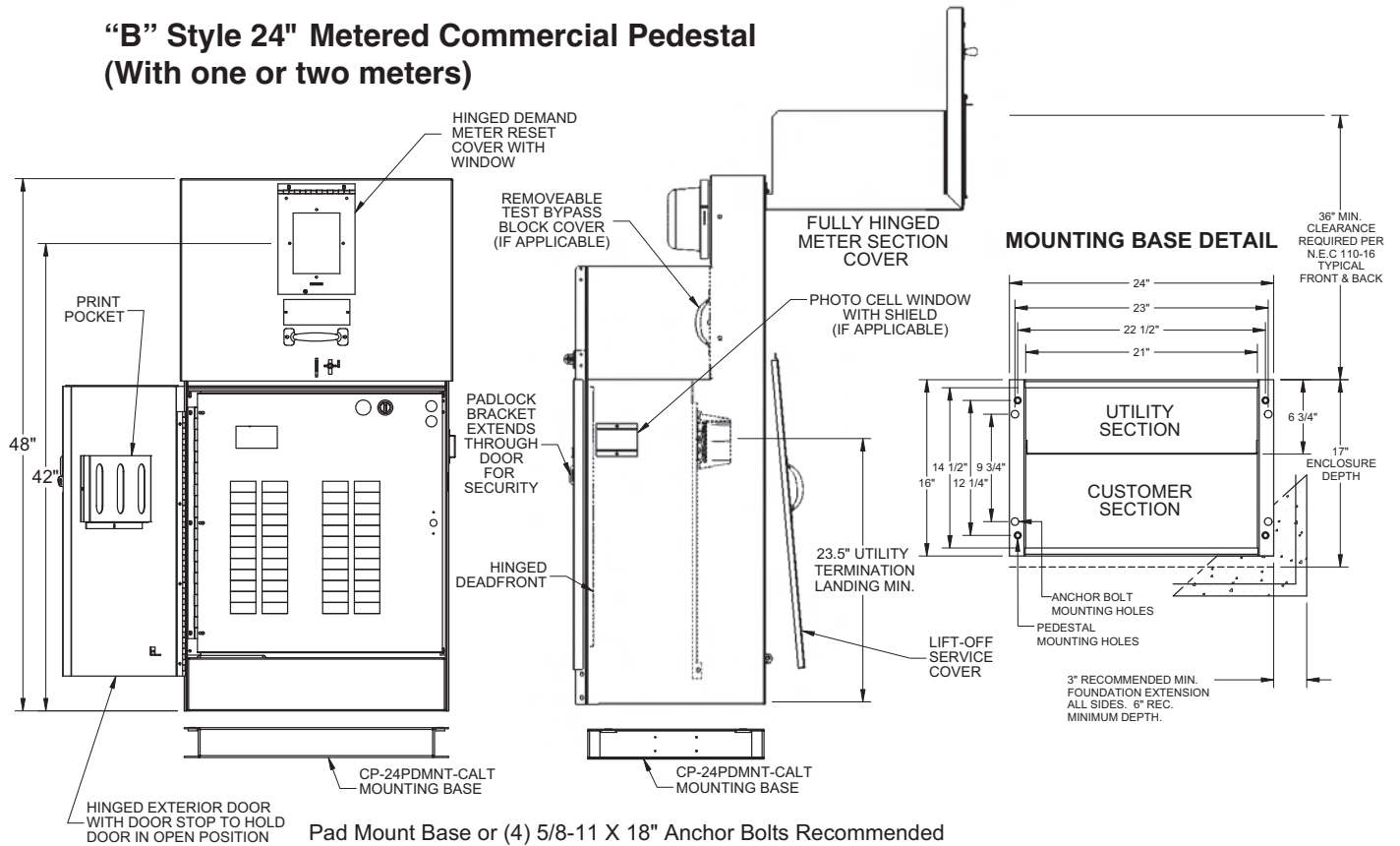
"E" Style 16" Unmetered Commercial Pedestal-Low Profile



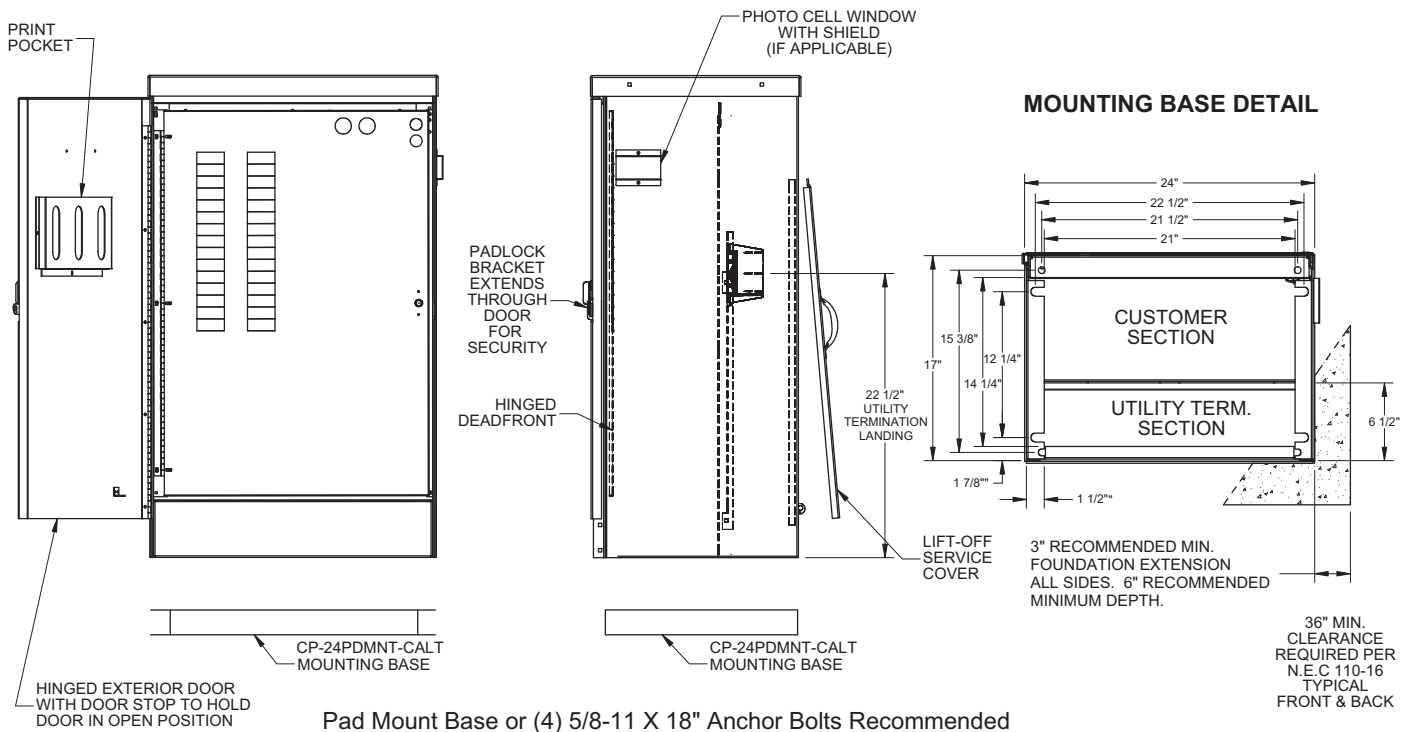
Pad Mount Base or (4) 5/8-11 X 18" Anchor Bolts Recommended

Utility requirements for this equipment may vary. Always consult the serving utility before ordering or installing equipment in this catalog.

"B" Style 24" Metered Commercial Pedestal (With one or two meters)

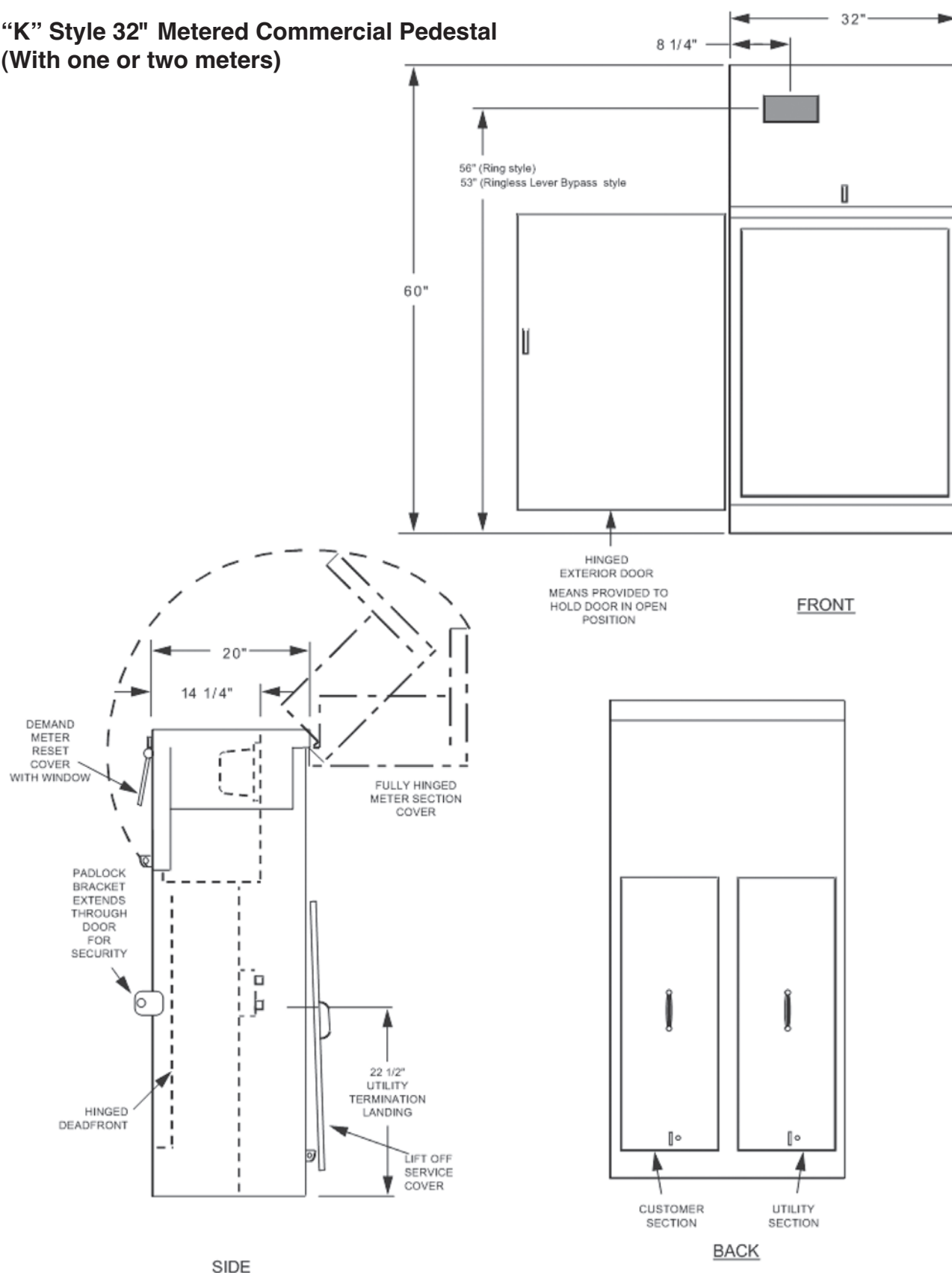


"M" Style 24" Unmetered Commercial Pedestal



Utility requirements for this equipment may vary. Always consult the serving utility before ordering or installing equipment in this catalog.

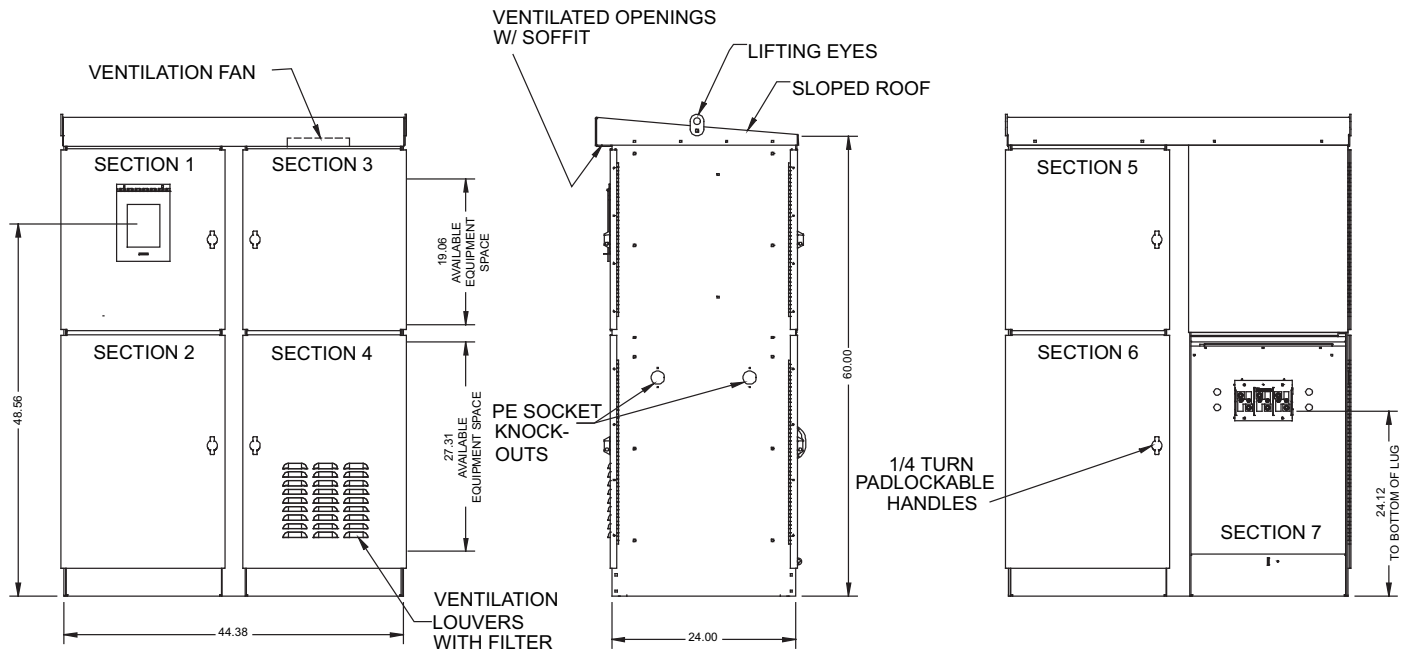
"K" Style 32" Metered Commercial Pedestal (With one or two meters)



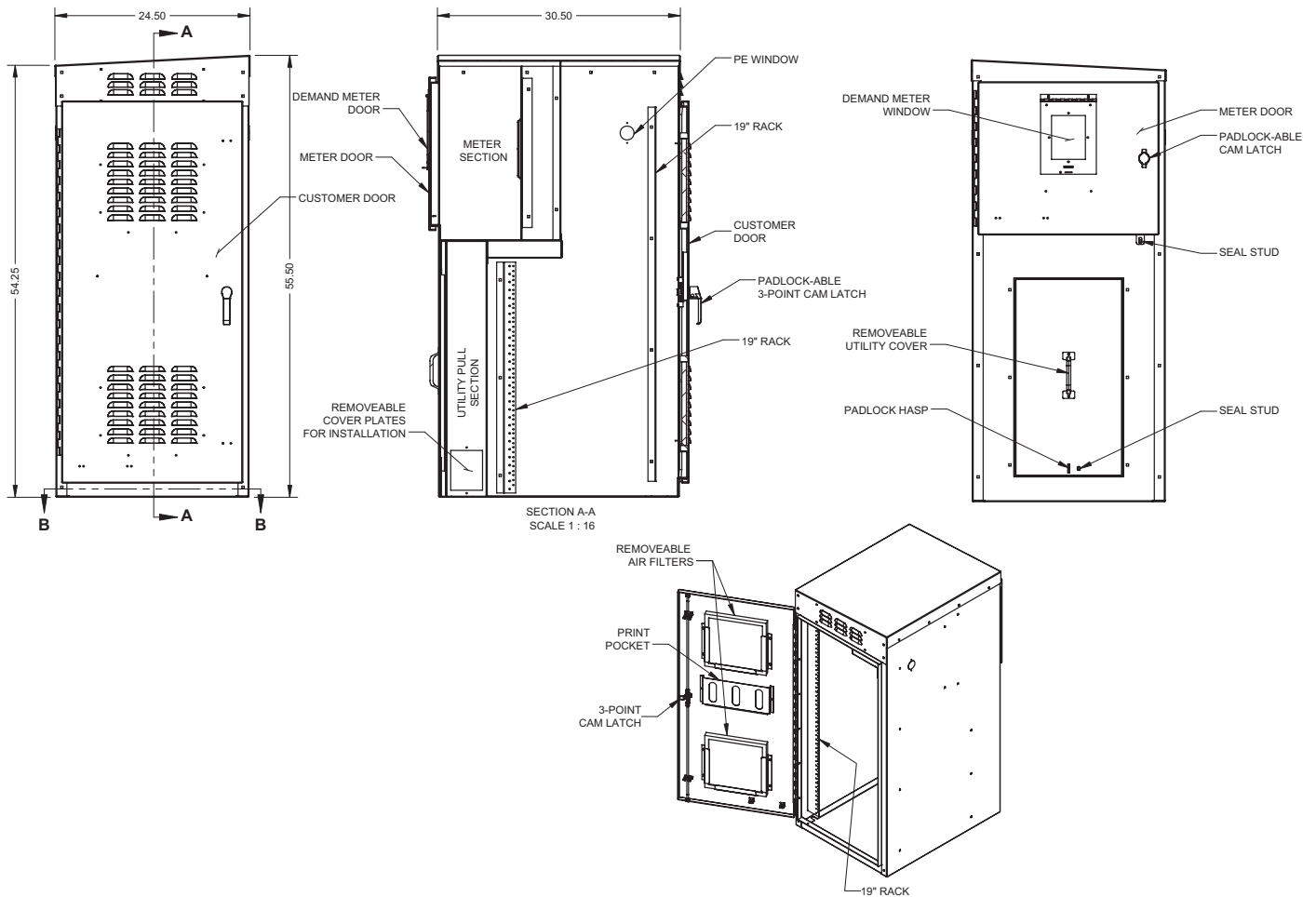
(4) 5/8-11 X 18" Anchor Bolts Recommended
Catalog Number CP-ABK5/8

Utility requirements for this equipment may vary. Always consult the serving utility before ordering or installing equipment in this catalog.

“D” Style Metered Commercial Pedestal



“C” Style 54" Metered Commercial Pedestal



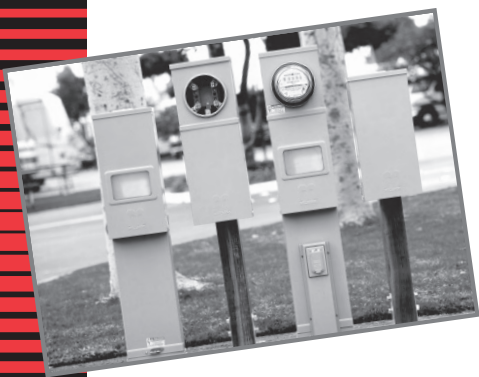
Utility requirements for this equipment may vary. Always consult the serving utility before ordering or installing equipment in this catalog.

Other quality products available from Milbank

Recreational Vehicle Park Electrical Products & Accessories

Millennium Series

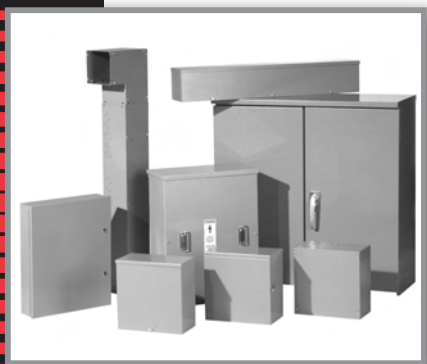
INCLUDES REPLACEMENT PARTS



Industrial Electrical Enclosures



Commercial Electrical Enclosures



In addition to your local utility's meter mounting equipment, Milbank also manufactures supporting products, such as...

Air Conditioner Disconnects

Hot Tub Disconnects

RV/Mobile Home Power Outlets

Terminal Boxes

Temporary Power Outlets

Commercial Pedestals

Commercial Enclosures

CT Enclosures

Circuit Breakers

Enclosed Circuit Breakers

Safety Switches

Test Switches

*Contact your local distributor or go to
www.milbankmfg.com
to find additional product literature.*



Commercial Pedestal Worksheet

Phone (816)483-5314 • Fax (816)483-6357

Please answer all of the questions as best as you can. Additional comments as to application and future requirements will help Milbank will determine the best product for your job.

Distributor: _____ Phone: _____ Fax: _____

Contact Name: _____ Application: _____

Milbank Representative: _____ Salesmen: _____

Job Name & Location: _____

Agency Specifications: (DOT-City-Other) _____

Unit Amperage: _____ Voltage: _____ Phase: _____ Wire: _____

Meter socket (200 Amp) RING-TYPE RINGLESS Fifth Terminal? NO YES (at _____ o'clock)

Meter socket (200 Amp) RING-TYPE RINGLESS Fifth Terminal? NO YES (at _____ o'clock)

Main breaker requirements: Amp: _____ Poles: _____ KAIC: _____

Main breaker requirements: Amp: _____ Poles: _____ KAIC: _____

Interior #1 0-42 circuits _____ Load center _____ Panel board _____ Metered? YES NO

Interior #2 0-42 circuits _____ Load center _____ Panel board _____ Metered? YES NO

Branch breakers: Amps: _____ Poles: _____ KAIC: _____ Label & Special requirements:

Qty _____ Breakers _____

Qty _____ Breakers _____

Qty _____ Breakers _____

Qty _____ Breakers _____

Qty _____ Breakers _____

Qty _____ Breakers _____

Controls:

Qty _____ Time Clock: 24 Hr _____ 7 Day _____ 365 Day Astro _____ Description: _____

Qty _____ Photo Electric Control Receptacle

Qty _____ Test switch: 2 Pos. _____ 3 Pos. _____ HOA Type _____ Other _____

Qty _____ Control Transformer _____ Voltage _____ VA Size (required for all 277/480v)

Contactors:

Type: Lighting - LT / Definite Purpose - DP / Mechanical Held - MH / Mercury - MV / IEC - IC

Qty _____ Type _____ Amps _____ Poles _____ Coil voltage _____ Other _____

Qty _____ Type _____ Amps _____ Poles _____ Coil voltage _____ Other _____

Qty _____ Type _____ Amps _____ Poles _____ Coil voltage _____ Other _____

Cabinet / Finish requirements: Alum - Untreated = AO / Alum Anodized = AL / Stainless Steel = SS

Aluminum - Painted = A / GALVANIZED STEEL PAINTED (STANDARD) _____ (specify paint below)

MINT GREEN (STANDARD) = G / Pine Green = PG / Dark Green = DG / Black = BK / Desert Tan = DT

White = W / Gray = P / Summerland Gray = SG / Other (RAL finish number) _____

Other Requirements: _____

Please send any drawings, plans, specifications, and load/panel board schedules with worksheet

Meter Mounting Equipment & More!

Commercial Electrical Enclosures

Residential & Commercial Metering

Commercial Meter Pedestals

Disconnect Devices

Current Transformer Enclosures

RV/MH Pedestals

Temporary Power Outlets

Circuit Breakers

Enclosed Circuit Breakers

Safety Switches

Test Switches



REPRESENTATIVE

DISTRIBUTOR

MILBANK MFG. CO.

P0 Box 419028

Kansas City, MO 64141-0028

Tel: 816-483-5314 Fax: 816-483-6357

Toll Free: 877-483-5314

www.milbankmfg.com

MILBANK®



www.milbankmfg.com

CMP 8/09 (5K)